

Bahama Breezes

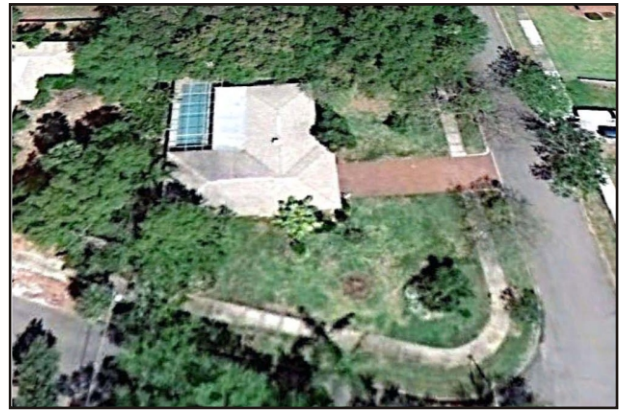
5819 3rd Street S • St. Petersburg, FL 33705

Offered for \$299,000

4 Bedrooms • 3 Baths • 2 Car Garage

Built in 1961 • 126' x 116' Lot • 1,866 sq. ft. • MLS#7500610

www.5819-3rdStS.com



This spacious home enjoys an oversized corner lot in Bahama Shores, one of southeastern St. Petersburg's most desirable neighborhoods. With wide streets and sidewalks, you'll love taking a nice walk, perhaps to the private waterfront park on Tampa Bay.

Nicely remodeled and updated (especially the kitchen and baths), the character of the home's original design has been highlighted, including beautifully restored terrazzo flooring throughout. There are formal living and dining rooms, plus a spacious family room that's open to the kitchen.

The kitchen itself is the heart of the home, with a casual dining counter for conversation with the chef. Light-colored solid surface counter tops allow the original wood cabinetry to give warmth to the room. A large window above the sink opens to the covered lanai for indoor/ outdoor dining and entertaining.

With four true bedrooms, there's room for everyone. It's a split plan, so the Master suite enjoys privacy on one side of the home. The Master bath is gorgeous, with a furniture-style vanity, a large glassed

shower and a walk-in closet. The other bedrooms are on the opposite side of the home, one with a private bath. A hall bath serves as a pool bath as well.

Sliding glass doors open from several rooms out to the screened lanai and pool area. At roughly 13 yards, it will satisfy the most serious swimmers! You'll spend lots of time outdoors here, surrounded by lush landscaping, including orange and papaya trees.

You'll feel like you've escaped the world when you come home here, but you're just minutes from the vibrant downtown district. Choose from several nearby waterfront parks to enjoy, including a boat launch just down the street.

There's easy access to the interstate system, and you can be either north to Tampa International Airport or south to the Ellenton Outlet Mall in a half hour. Or perhaps you'd rather go to the beach - just fifteen minutes away. **Make an appointment to see for yourself how much this home has to offer!**

See more photos & a visual tour:
www.5819-3rdStS.com

THE
SIMMS
TEAM



Office 727.898.2582 | Toll Free 888.SIMMS88
E-mail: info@SimmsTeam.com

ALVA International, Inc.
238 Beach Drive NE | St. Petersburg, FL 33701

www.SimmsTeam.com



Details . . .

Interior Features:

- Gorgeous refinished terrazzo floors throughout
- Wood-burning fireplace (living rm)
- Plantation-style shutters on sliding glass doors to lanai
- Remodeled kitchen with solid-surface counters and tile back-splash, casual dining counter
- Walk-in pantry closet and inside laundry room with washer & dryer
- All baths completely remodeled

Exterior Features/Systems:

- A/C condenser replaced 2009, inside air handler replaced 2007
- Tankless hot water heater
- Screened heated swimming pool approximately 13 yards long
- Covered lanai area
- Storage shed included
- Automatic sprinkler system on reclaimed water
- Orange & papaya trees, bay oaks
- Roof replaced 2002 by prior owner per public records

Miscellaneous/Other:

- Optional neighborhood association (Bahama Shores Neighborhood Association)
- Waterfront park for residents' use
- Average electric bill \$150-200/mo
- Average water/sewer \$110/mo
- Pest control \$81/quarter
- Homeowner's insurance \$3,600/yr
- 2010 property taxes \$3,147* with Homestead Exemption.

**Property taxes may have a significant increase with a change in ownership.*



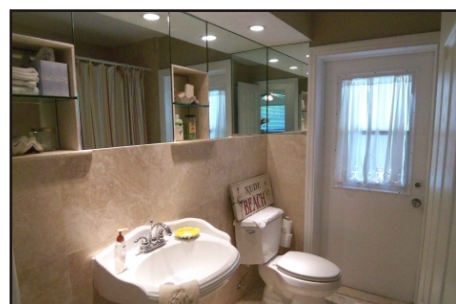
The Master suite enjoys privacy away from the other bedrooms. The remodeled bath has a large shower and a walk-in closet.



The other three bedrooms are on the opposite side of the home. One of these (above right) has a private bath.



This bedroom is currently used as an office.



This hall bath has a tub/shower and opens to the pool.



ROOM DIMENSIONS:

Living Room: 14' x 19'
 Dining Room: 11' x 9'
 Kitchen: 9' x 10'
 Family Room: 11' x 16'
 Master Bedroom: 10' x 19'
 2nd Bedroom: 10' x 11'
 3rd Bedroom: 9' x 14'
 4th Bedroom: 10' x 10'

Marketed by

THE
SIMMS
TEAM

Office (727) 898-2582 - Toll Free (888) SIMMS-88
 E-Mail: info@simmsteam.com

ALVA INTERNATIONAL, INC.
 238 Beach Drive NE, St. Petersburg, FL 33701



Take a visual tour of this home and others at www.SimmsTeam.com