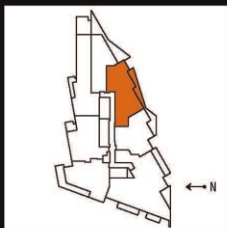
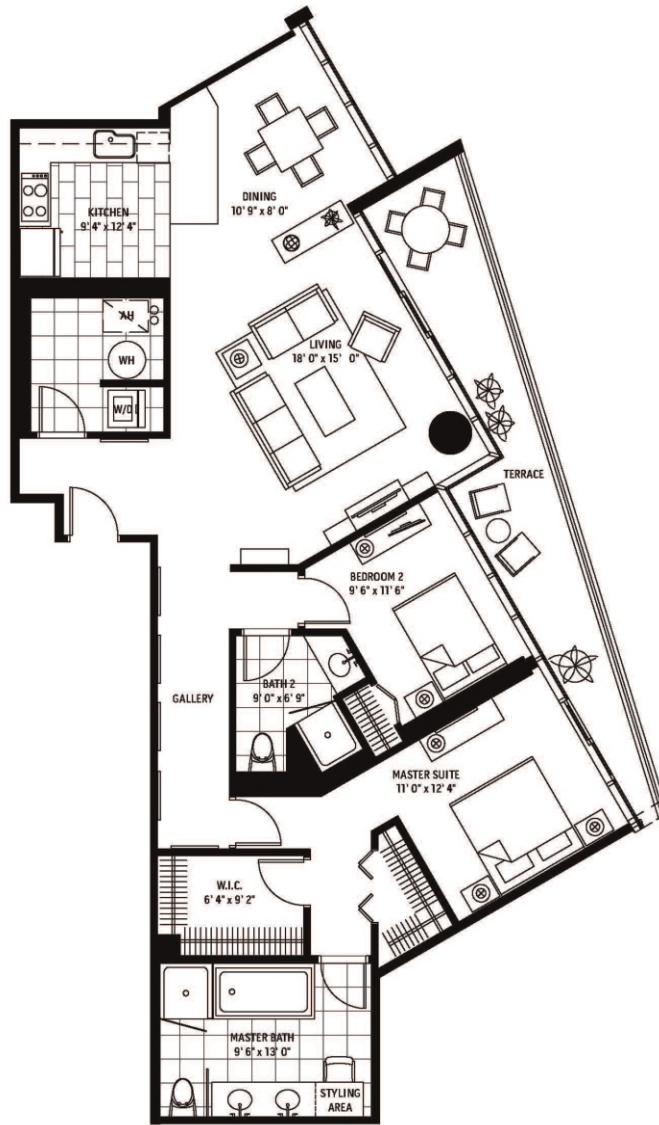


175 First Street S. #706 • St. Petersburg

## FLOOR PLAN



### SIGNATURE RESIDENCE B

2 Bedroom / 2 Bath

Interior	1,447 sq. ft	134 m <sup>2</sup>
Terrace	213 / 171* sq. ft	20 / 16* m <sup>2</sup>
Residence Total	1,660 / 1,618* sq. ft	154 / 150* m <sup>2</sup>

\*Floors 14 - 25



**SIGNATURE**  
PLACE TOWER LOFTS PLAZA



Floorplan are for illustration purposes only. All dimensions are approximate, and all floor plans and development plans are subject to change in accordance with and subject to the Condominium Documents.

Marketed by the SIMMS Team, Coastal Properties - See more details at [www.StPeteCondoLiving.com](http://www.StPeteCondoLiving.com)