

Build Your Dream

Placido Bayou

Gated community - Northeast St. Petersburg

80 x 140' Irregular Shaped Lot

Small pond frontage

Lush conservation in rear

Available for
\$275,000



The gated community of Placido Bayou is a beautiful refuge for its homeowners, built around ponds and conservation areas. It's just minutes from downtown, and ideally located near several popular private schools.

See a visual tour at www.ssimms.com - **Survey on reverse side**



Waterfront Lot

Broadwater - Southwest St. Petersburg

84 x 140' Lot Dimensions

Existing Seawall

Lush palms & tropical foliage

Available for
\$375,000

This waterfront neighborhood has homes from the \$400,000's to more than \$1 million, old and new, so the possibilities are unlimited for your dream home. Minutes from the Gulf Beaches and easy access to I-275.

See a visual tour at www.ssimms.com



Marketed by

THE SHARON SIMMS TEAM

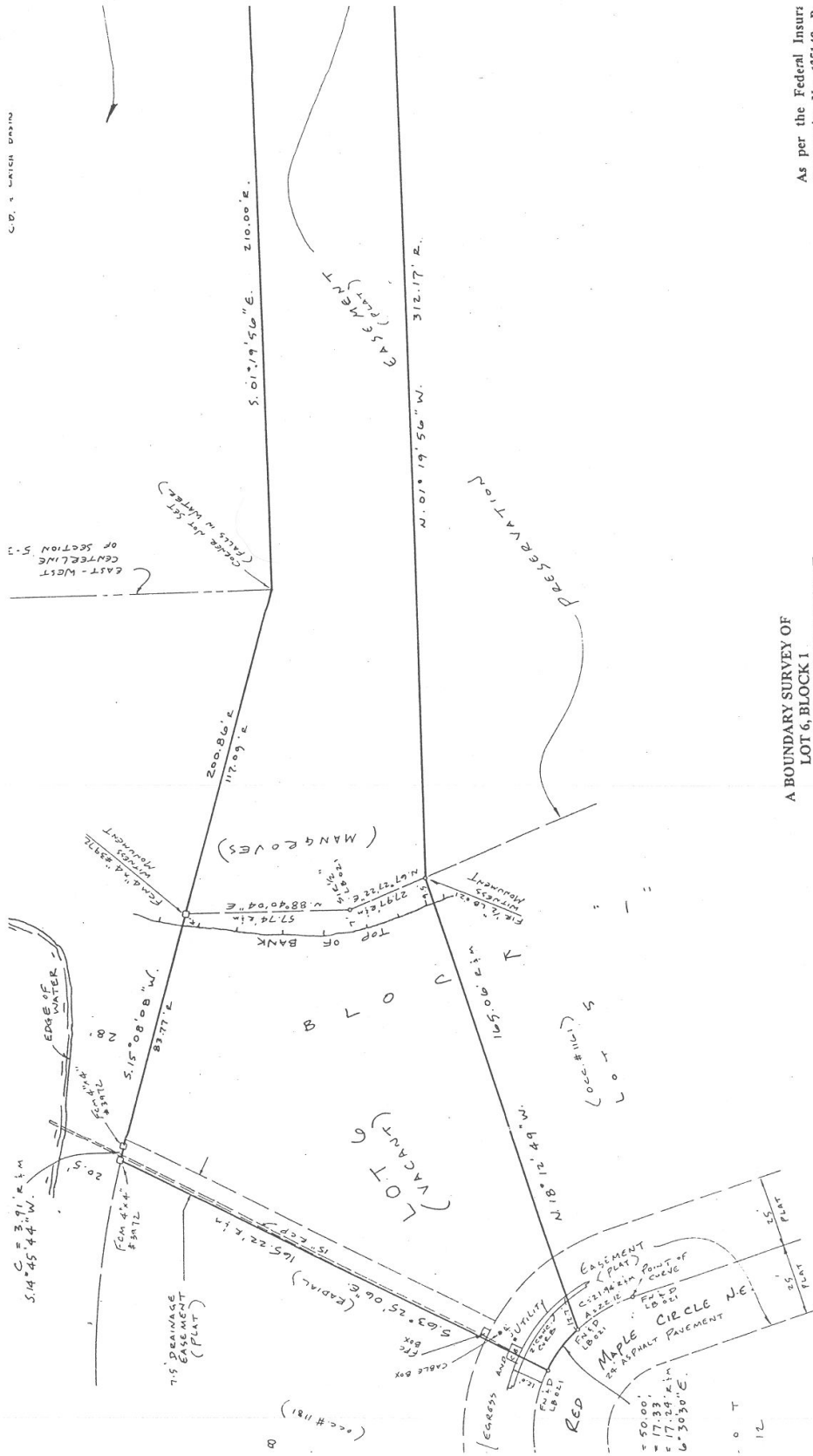
RE/MAX Metro

Direct (727) 866-0048

www.ssimms.com

Each Office Independently Owned And Operated.





As per the Federal Insur
Community No. 125148, P
property appears to be in Zi
Level.

A BOUNDARY SURVEY OF
LOT 6, BLOCK 1
PLACIDO BAYOU UNIT 6 PARTIAL REPLAT
As recorded in Plat Book 114
Pages 25 through 27
Public Records of Pinellas County, Florida

This survey was made

ST. PETERSBURG, FLORIDA