

Signature Wrap View

**175 First Street S. #1203
St. Petersburg, FL 33701**

1 Bedroom + Den • 1-1/2 Baths • 1,225 sq. ft.

Offered for \$425,000



Unit Features:

- Open floor plan with great room style
- Island kitchen design with stainless steel appliances
- Granite counters & ceramic tile floors in kitchen & baths
- Sliding glass doors to wrap-around balcony from living room and Master bedroom
- Inside laundry, with washer & dryer included
- Offered fully furnished

Building Features:

- Building construction completed in 2009
- 24 hour, 7 day a week concierge staffed lobby
- Secure parking garage (1 assigned parking space #155), and secure storage unit (#99)
- Sky garden with infinity edge pool & spa, lounge and outdoor seating areas and putting green
- Several recreation rooms on two different floors
- Fitness center with separate spaces for equipment and floor exercise, locker rooms

Miscellaneous/Other:

- Monthly maintenance fee \$726, includes water/sewer, basic cable tv, internet, pest control, building maintenance, building insurance, and reserves
- \$100 application fee, includes background & credit checks
- 12 month minimum leases, no pets for tenants
- Average electric bill \$100/month
- 2012 taxes \$6,418 without Homestead exemption

More photos and a visual tour can be seen at
www.SignaturePlace1203.com

THE
SIMMS
TEAM

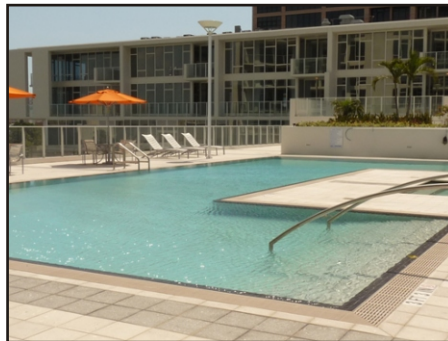
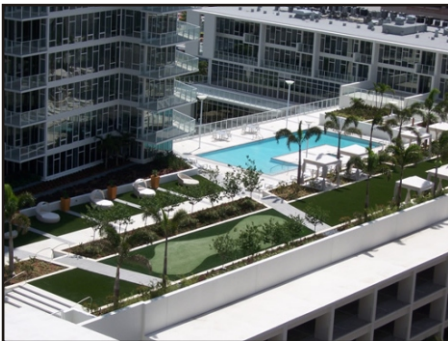
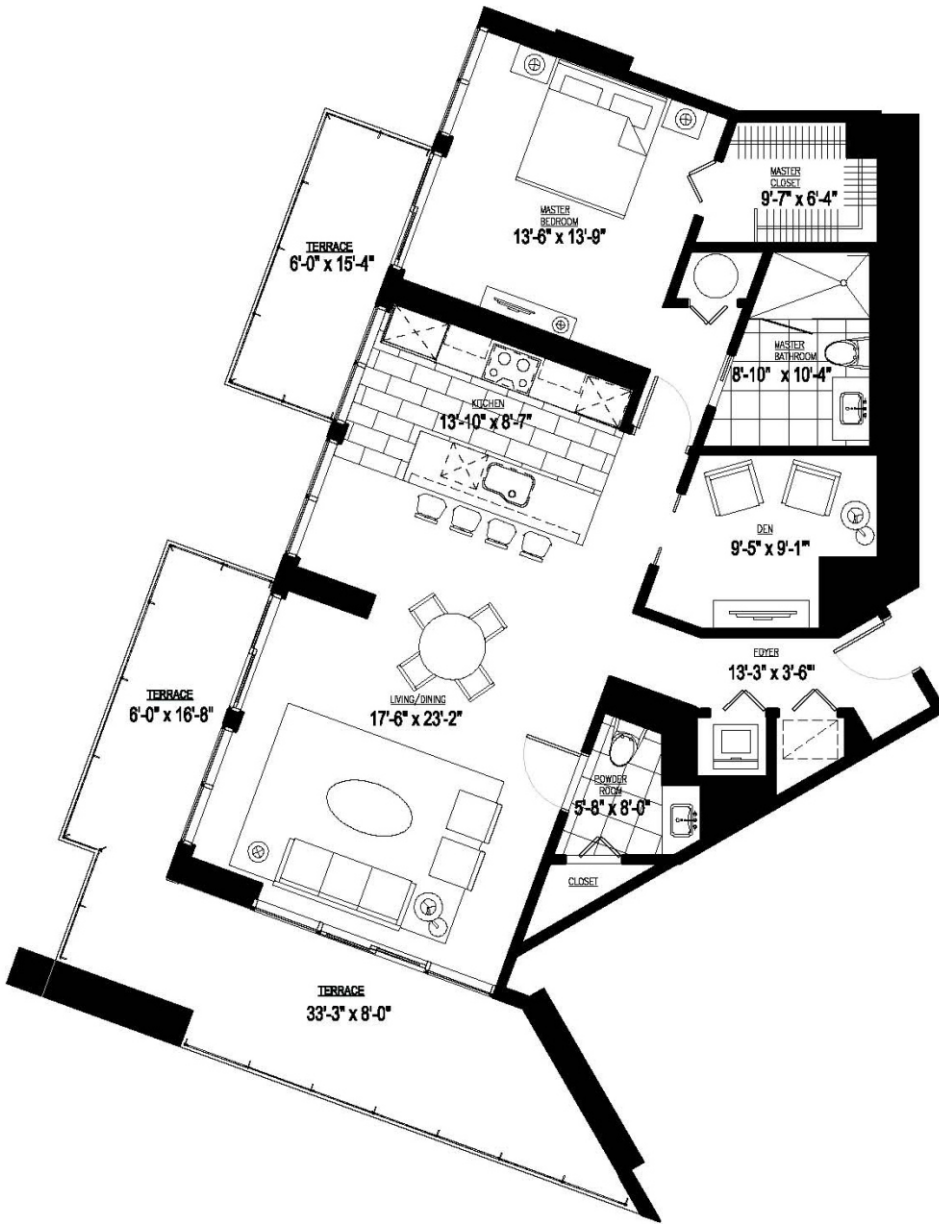


Office 727.898.2582 | Toll Free 888.SIMMS88
E-mail: info@SimmsTeam.com

ALVA International, Inc.
238 Beach Drive NE | St. Petersburg, FL 33701



www.SimmsTeam.com



**THE
SIMMS
TEAM**



Office 727.898.2582 | Toll Free 888.SIMMS88
E-mail: info@SimmsTeam.com

ALVA International, Inc.
238 Beach Drive NE | St. Petersburg, FL 33701



www.SimmsTeam.com