

# The Palmview

6121 8th Avenue S. • Gulfport, FL 33707

3 Bedrooms • 2 Baths • 2 Car Garage  
1,718 square feet • MLS# U7562525

Offered for \$275,000.



Peninsula kitchen with raised panel oak cabinetry, granite counter tops.



Dining room with sliding glass doors opening to the lanai.



The Master suite also opens to the covered lanai and fenced rear yard.

See more photos & a visual tour: [www.SimmsTeam.com](http://www.SimmsTeam.com)

Take advantage of rare new construction in an established neighborhood with brick streets and canopies of shady mature trees. "The Palmview" by Apple Homes offers all the amenities of a new home just where you want it!

There's great curb appeal to welcome you home. Inside, vaulted ceilings and a great room design give a sense of space and comfort. Ceramic tile flooring is cool and easy to keep up. Look out through the sliding glass doors to the covered lanai and the fenced backyard.

The kitchen features a casual dining peninsula and plenty of space for prep and serving. The counters are a warm but neutral St. Cecilia Gold granite offset by a tumbled marble backsplash and solid oak cabinetry. GE appliances are sleek stainless steel. There's a nice dining area adjacent to the kitchen.

It's a split bedroom plan, with the Master suite enjoying privacy on the east side of the home. Sliding glass doors open out to the lanai. There are two large walk-in closets, and the bath features double sinks with a cultured marble counter top. The shower has a ceramic tile surround, and there's a private water closet.

An inside laundry room and spacious 2 car garage are hard to find in an older home - you'll appreciate having all of these amenities in such a great location! You're just minutes from Stetson University College of Law, award-winning Gulf Beaches and Gulfport's historic waterfront district. Exciting downtown St. Petersburg is just fifteen minutes' drive, and the Tampa airport is roughly a half hour away.

With anticipated completion just before the end of the year, you won't have to wait long to have it all - call today to find out more!



THE  
SIMMS  
TEAM



Office 727.898.2582 | Toll Free 888.SIMMS88  
E-mail: [info@SimmsTeam.com](mailto:info@SimmsTeam.com)

ALVA International, Inc.  
238 Beach Drive NE | St. Petersburg, FL 33701

[www.SimmsTeam.com](http://www.SimmsTeam.com)



# Details . . .

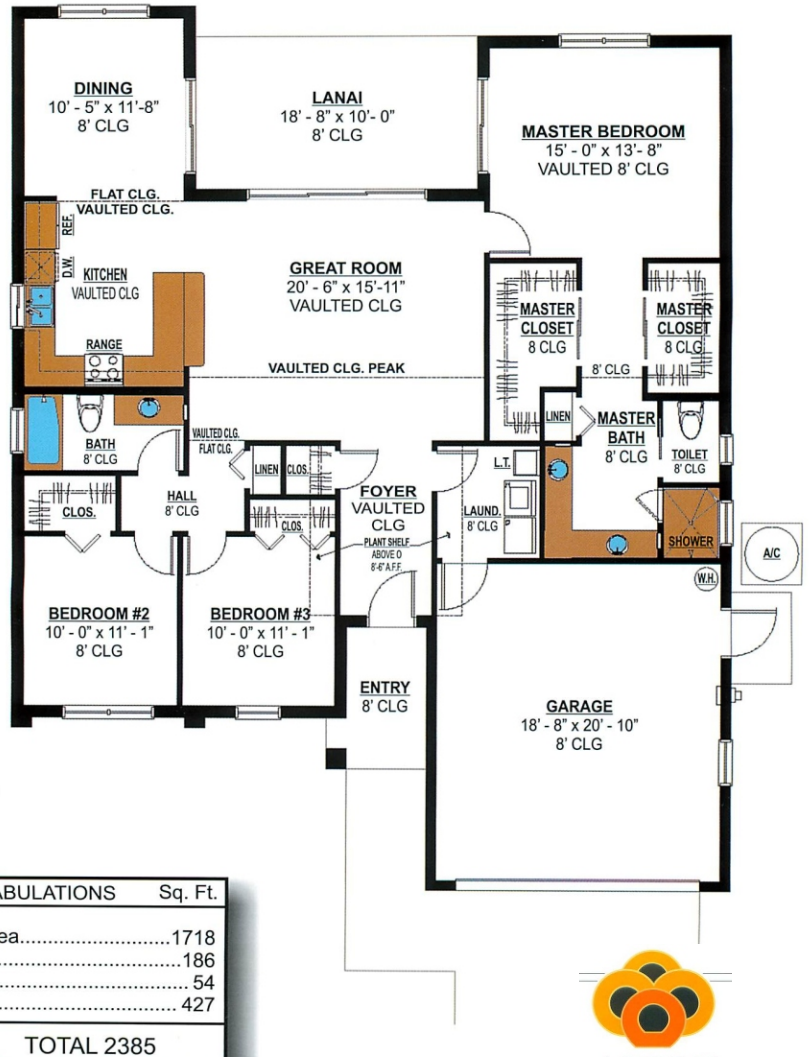
## Interior Features:

- Great room plan with vaulted ceilings and plant shelves
- 24" ceramic tile flooring throughout except bedrooms
- Island kitchen features solid oak cabinetry, St. Cecilia Gold granite counters, tumbled marble backsplash, stainless steel GE appliances (dishwasher, microwave, stove)
- Inside laundry room
- Master suite features sliding glass to lanai, two walk-in closets, bath with double sinks
- Cultured marble counter tops in both bathrooms

## Miscellaneous/Other:

- Windows are double pane, energy efficient Low-E with 130 lb. design pressure
- Hurricane shutters (riveted)
- Standard R-30 insulation
- Amarr Stratford garage door rated to 140 mph with 15 year warranty with automatic opener
- Sprinkler system on city water
- PVC fenced rear yard
- CertainTeed Landmark Series dimensional shingle roof with 30 year limited transferrable warranty
- 3 ton, 14 SEER Carrier A/C
- 2-10 Builder Warranty covers 1 year workmanship, 2 years systems, 10 years structural

# The Palmview



AREA TABULATIONS	Sq. Ft.
Living Area.....	1718
Lanai.....	186
Entry.....	54
Garage.....	427
<b>TOTAL 2385</b>	



Note: Elevations and Floor plans are deemed accurate but not warranted. This brochure is to be considered an artist rendering, not a construction document.

## Why Choose an Apple Home?

Apple Homes is a family owned and operated home building company with over 50 years experience. They have a proven track record of value and customer satisfaction. By choosing an Apple Home you're assuring yourself that you'll have a quality built home.

[www.applehomesfla.com](http://www.applehomesfla.com)

Marketed by

THE  
**SIMMS  
TEAM**

Office (727) 898-2582 - Toll Free (888) SIMMS-88  
E-Mail: [info@simmsteam.com](mailto:info@simmsteam.com)

ALVA INTERNATIONAL, INC.  
238 Beach Drive NE, St. Petersburg, FL 33701



Take a visual tour of this home and others at [www.SimmsTeam.com](http://www.SimmsTeam.com)